



SINCE 1946

F1

BROOKLYN



100% MADE IN ITALY

ITALIANO



ENGLISH





BROOKLYN



mod. 101cm



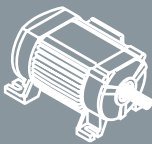
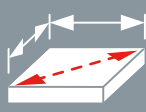

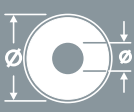
mod. 131cm



mod. 151cm



mod. 181cm

Art. Item				
F1-101	230 V~ 2,2 kW (3 HP) 13,5 A 50 Hz 2.800 min ⁻¹	101 (71x71) cm 40 (28x28) inch	0 ÷ 5 cm 0 ÷ 2 inch	250/25,4 mm 10 / 1 inch
F1-131		131 (92x92) cm 51,5 (36x36) inch		
F1-151		151 (106x106) cm 59,5 (41,5x41,5) inch		
F1-181		181 (128x128) cm 71,5 (50x50) inch		
F1-101-115V	115 V~ 1,5 kW (2 HP) 18 A 60 Hz 3.360 min ⁻¹	101 (71x71) cm 40 (28x28) inch	0 ÷ 5 cm 0 ÷ 2 inch	250/25,4 mm 10 / 1 inch
F1-131-115V		131 (92x92) cm 51,5 (36x36) inch		
F1-151-115V		151 (106x106) cm 59,5 (41,5x41,5) inch		
F1-181-115V		181 (128x128) cm 71,5 (50x50) inch		

USAGE INSTRUCTIONS



Necessity



Prohibited



Danger



Carefully read and maintain.

1 | ELECTRIC WATER CUTTER

- **EXCLUSIVELY** for the cutting and beveling (Jolly) of porcelain tile, klinker, terracotta, single-fired, ceramics, concrete and stone materials.
- For professional use only.



2 |

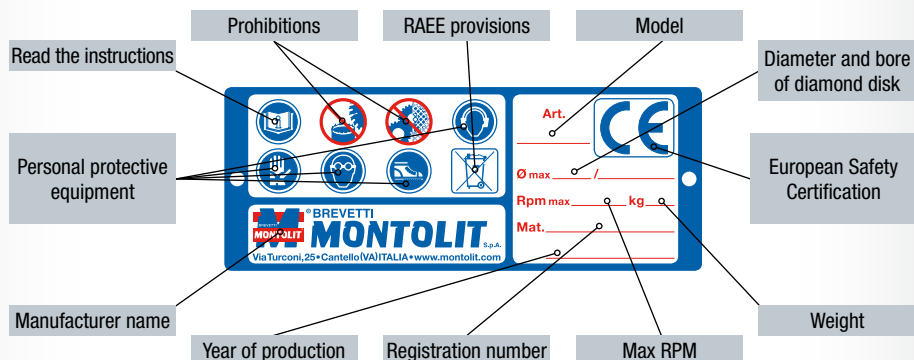
- Before leaving the production workshop, your machine has been subjected to serious testing to ensure its quality, safety and efficiency. By carefully following the instructions contained in this manual, you ensure a long life for your machine under normal usage conditions.
- Before using the machine, carefully read this instruction manual in order to avoid accidents or malfunctions.
- Do not tamper with the protections and guards provided by the manufacturer in any way.
- Do not modify any part of the machine in any way.
- All modifications must be made by the manufacturer only.
- Only use original spare parts.
- Brevetti MONTOLIT disclaims any liability in the event of non-compliance.

3 | CAREFULLY FOLLOW THE REGULATIONS IN PLACE REGARDING HEALTH AND SAFETY IN THE WORKPLACE

- The use of individual hearing protectors is mandatory as per Directive 2003/10/CE.
- The vibrations produced by the machine and evaluated according to regulation UNI-EN-ISO 5349-1-2004 are considered to be irrelevant.



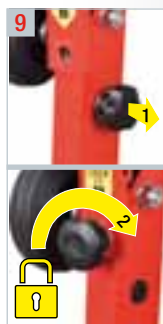
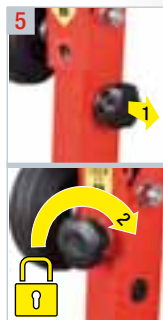
4 | IDENTIFICATION PLATE



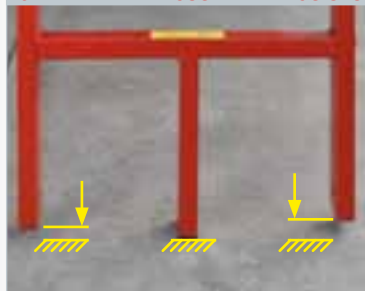
5 ASSEMBLY AND PREPARATION

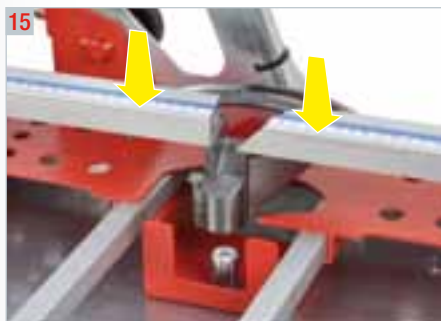


	Weight (kg)	Capacity (lt)
mod. 101cm	75	25
mod. 131cm	85	25
mod. 151cm	100	25
mod. 181cm	112	25



10 • PATENTED ADJUSTABLE LEGS SYSTEM • x mod. 151/181cm



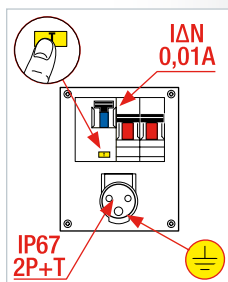


6 | ELECTRIC POWER SUPPLY

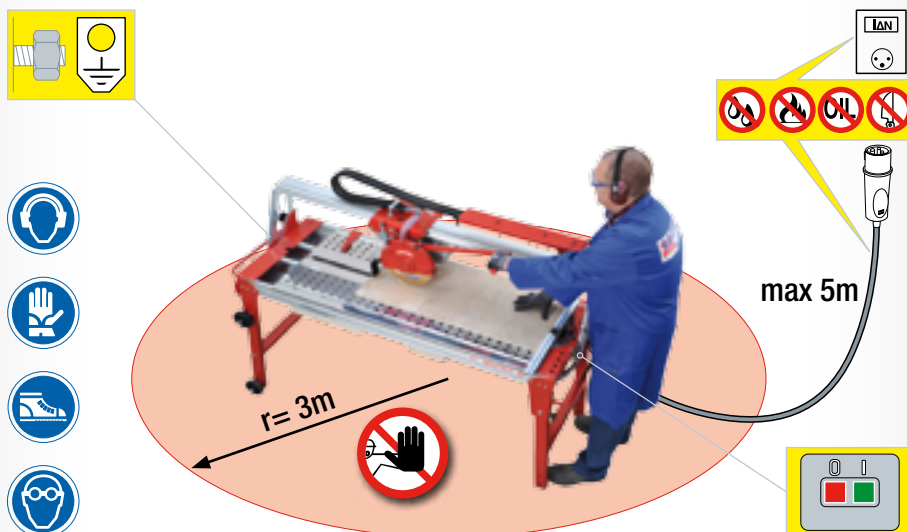


WARNING!

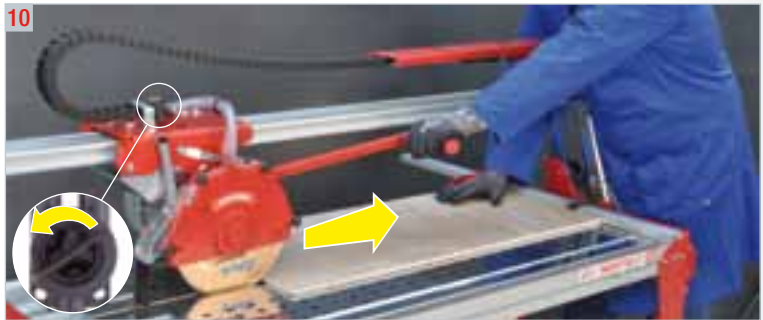
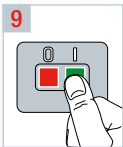
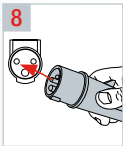
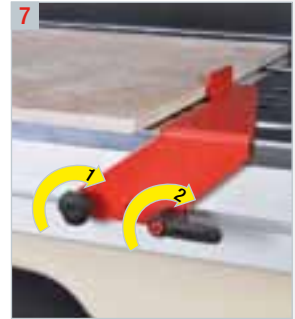
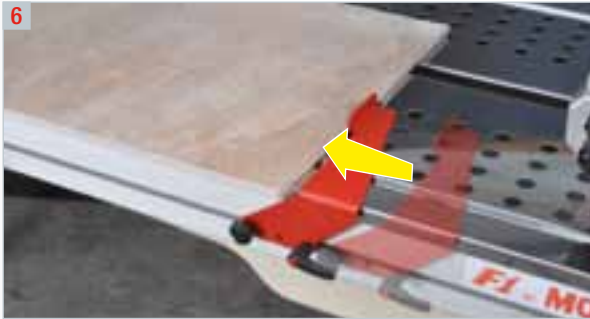
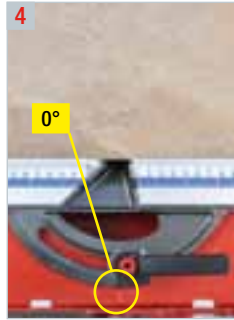
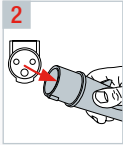
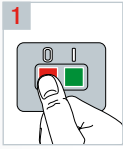
- Check the integrity of the cable and breakers.
- Respect the voltage (V) and frequency (Hz) indicated on the machine.
- Carry out the electrical connection with ground (yellow/green) to an IP67 outlet (2P+T) protected by an IΔN 0.01A differential breaker.
- Periodically check the operation of the differential breaker.
- For an extension, use only the IP67 (2P+T) socket and plug and a 3 x 2.5mm² cable of the H 07 RN-F type (max length 5 m).
- Check the placement of the power cable: it must not obstruct movement, and should not be subject to shock or damage.
- Remove the electrical connection during each routine or extraordinary maintenance operation, for the loading of coolant (water), or for the substitution of the diamond disk.
- Models equipped with a thermal protection switch and minimum voltage coil.
- Avoid forcing the motor during processing. The machine has a security system that protects it from engine overheating; consequently, if the motor is arrested without apparent reason, it is necessary to wait a few minutes so that the safety circuit is deactivated, as the machine has almost certainly been subjected to excessive force and the cutting advancement speed must therefore be moderated.
- IP55 single phase engine with electromagnetic emissions below the provided limits.
- In the case of malfunction regarding a breaker, cable, engine, or pump, consult an expert or our Technical Office.



- The operator must position himself in a safe and balanced way and must not be distracted during processing.
- The operator is always responsible for accidents that may occur to other people or their property.
- Do not allow other people to touch the machine or the cable. They must be kept away from the work space.
- It is advisable to wear rubber gloves and shoes with slip-resistant soles. If you have long hair, it must be gathered up or a protective cap used. Wear protective goggles.
- Use adequate hearing protection.
- Do not wear large clothing, objects or jewelry that can become stuck in moving parts.
- The work area must be flat, dry, free of obstacles, well ventilated and illuminated.
- Do not use the machine near flammable liquids or gas.
- Keep the cable away from high temperatures, oil, and sharp edges.
- Before starting any cutting operation, ensure that the column locking knobs are screwed to the bottom (fig. 1), that the legs are locked with the appropriate bolts (fig. 2-3), and check the cooling water level.

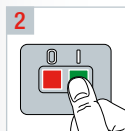
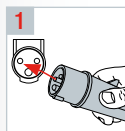


8 | CORRECT USE - 90°



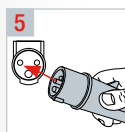
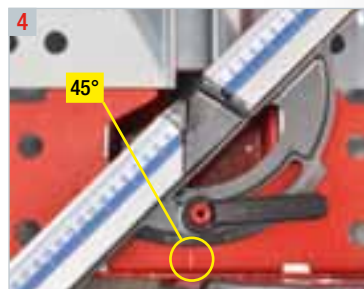
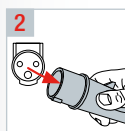
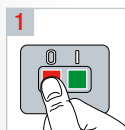
- Position the tile against the square. Lock the tile with Squeeze System (fig. 6/7).
- Press down to switch the driving handle and lock it.
- The correct position of the hands is shown in figure 10.
- Proceed to cutting by slowly positioning the diamond disk against the material to be cut, advancing with a speed proportional to the thickness and hardness of the material.
- Slow down the advancement speed near the end of cutting.
- After having completed the cut, turn the engine off through the switch. Bring the engine back to its original position.

8.1 CORRECT USE - SQUARE AND RECTANGULAR HOLES



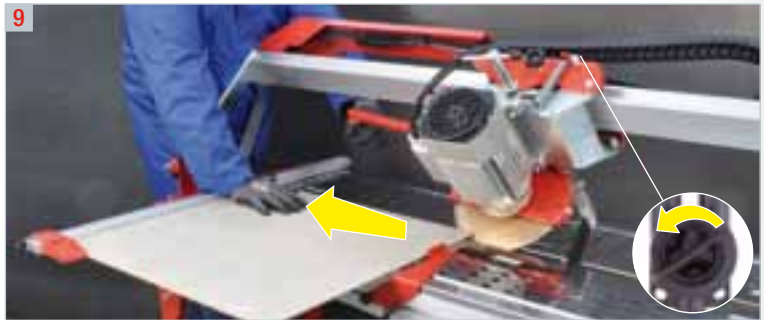
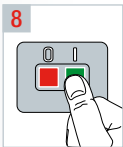
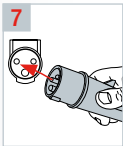
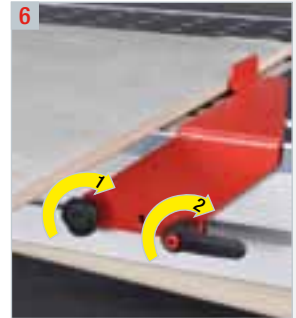
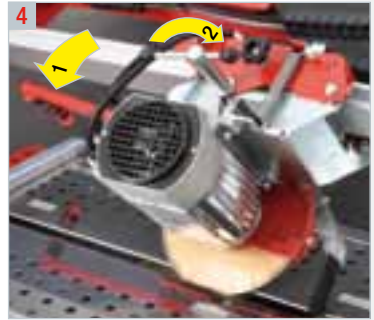
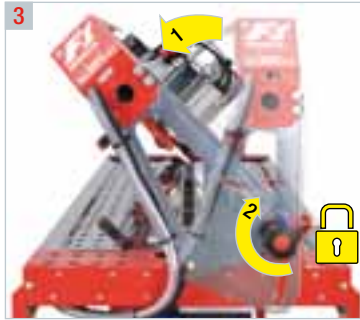
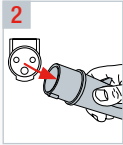
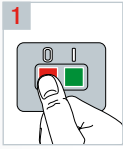
- Maximum material thickness 3.5 cm.
- Gradually press down on the driving handle so that the disk enters the plate and emerges from the opposite side.
- The correct position of the hands is shown in figure 3.

8.2 CORRECT USE - 45°



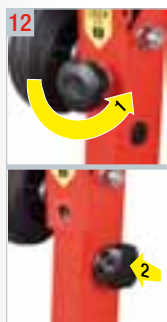
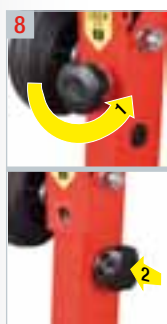
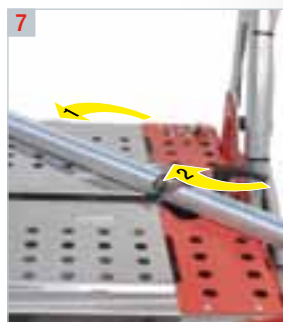
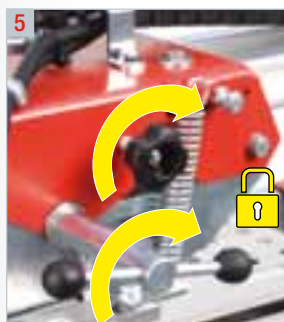
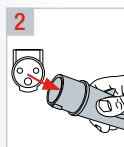
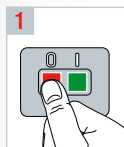
- Position the tile against the square.
- Press down to switch the driving handle and lock it.
- The correct position of the hands is shown in figure 7.
- Proceed to cutting by slowly positioning the diamond disk against the material to be cut, advancing with a speed proportional to the thickness and hardness of the material.
- Slow down the advancement speed near the end of cutting.
- After having completed the cut, turn off the engine through the switch. Bring the engine back to its original position.
- Whenever the end of the tile breaks (the last centimeter), sharpen the diamond disk. If the defect remains it can be remedied in the following way:
 - 1 - make a cut of about 2 cm from one side of the tile.
 - 2 - rotate it and follow the cut through until reunification with the 2 cm cut previously carried out.

8.3 CORRECT USE - JOLLY



- Position the tile against the square. Lock the tile with Squeeze System (fig. 5/6).
- Press down to switch the driving handle and lock it.
- The correct position of the hands is shown in figure 9.
- Proceed to cutting by slowly positioning the diamond disk against the material to be cut, advancing with a speed proportional to the thickness and hardness of the material.
- Slow down the advancement speed near the end of cutting.
- After having completed the cut, turn off the engine through the switch. Bring the engine back to its original position.

9 INSTRUCTIONS FOR HANDLING AND TRANSPORT



16



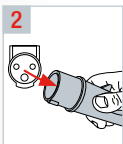
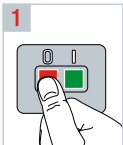
10 SUBSTITUTION OF THE DIAMOND DISK

- Use only diamond disks of the diameter and type set out by Brevetti MONTOLIT.
- For greater cut precision and economy, choose the MONTOLIT diamond disk specific to the use by consulting the MONTOLIT catalog.



IMPORTANT!

- The diamond tool and its mounting system must always be in perfect condition.
- The use of diamond tools with excessive wear, eccentricity and/or micro-scratches on the diamond crown is dangerous.
- In case the tool does not cut, it should be sharpened by using the appropriate MONTOLIT sharpening stick (art. 395B).



ATTENTION! Left thread: to unscrew, turn clockwise

11 PERIODIC CLEANING

- Prior to cleaning, maintenance or repair of equipment, as before transport, the machine must be turned off and unplugged.
- Machine cleaning:
 - do not use water jets but a wet sponge,
 - keep the scroll bar clean (not oily).
- The use of tools that may affect the paint is not recommended.
- Tank cleaning:
 - extract the grill and remove the cap, letting the water flow from the tank and proceeding to cleaning,
 - remove the tank and clean it of cutting debris and residue.



12 ROUTINE MAINTENANCE

- Periodically examine the machine cables, and in the case that they are damaged, have them repaired by the authorized technical service.
- Keep the handles dry, clean and without oil or grease.



ATTENTION!

Guards or other damaged parts should be properly repaired or replaced by the authorized technical service, unless otherwise indicated in this operation manual.

13 PUTTING OUT OF SERVICE

- Carry out regular cleaning and routine maintenance.
- Store everything in a dry, safe place, away from children.

14 DISMANTLING OF THE MACHINE

- Follow the local provisions for the disposal of electrical products.
- Valuable materials can be recovered by recycling.
- The electrical components used for construction are in accordance with the regulation RoHS 2002/95/EC.
- Contact our Technical Office for further information.



15 ACCESSORIES

- The machine comes with a simple forked wrench and a hexagonal wrench to use for disk mounting/dismantling, of an already mounted disk series in this use and maintenance manual.

16 LOCATION TROUBLESHOOTING

PROBLEM	CAUSE	REMEDY
The machine is not working.	<ul style="list-style-type: none"> • The plug is badly inserted in the power socket. • The power cable is interrupted. • There is no voltage at the outlet. • The switch is damaged. • The engine is not connected. 	<ul style="list-style-type: none"> • Push the plug into the outlet all the way. • Consult the authorized service center or dealer.
The engine starts with difficulty.	<ul style="list-style-type: none"> • The condenser is broken. • The voltage indicated on the technical data tag does not reach the motor. 	<ul style="list-style-type: none"> • Consult the authorized service center or dealer.
The machine turns off during working.	<ul style="list-style-type: none"> • Excessive engine temperature. 	<ul style="list-style-type: none"> • Wait for the engine to cool.
Water does not get to the diamond disk.	<ul style="list-style-type: none"> • The pump is not working. • The water level in the tank is too low. • The tap is blocked. • The water recirculation tube is bent or blocked. • Clogged holes in the filter or in the pump rotor cover. 	<ul style="list-style-type: none"> • Make sure that the pump is free of cutting debris. If the pump needs to be substituted, contact the authorized service center or dealer. • Add water to the tank. • Clean or replace the tap. • Remove the water delivery tube from the pump and blow into it. Clean or substitute it according to its state of wear. • Unblock all of the holes present in the filter and pump rotor cover.
The slider has excessive play.	<ul style="list-style-type: none"> • Excessive wear. 	<ul style="list-style-type: none"> • Consult the authorized service center or dealer.

17 GUARANTEE

Valid for 2 (two) years from the date of sale (invoice or delivery note or sales tax receipt).
Breakdowns resulting from non-conforming use or normal wear are excluded from this guarantee.

Brevetti MONTOLIT has always employed and provided first choice materials. This is a commitment to seriousness and commercial morality that elevates our company to the highest standard. The product's safety and warranty are a source of pride for us. This operational reality is not just words, but a real and written guarantee. In fact, we ensure all of our products against involuntary damage caused by accidents occurring as a result of a construction or manufacturing defect, even after delivery and commercialization.



The descriptions and diagrams are intended to provide a simple means of illustration. The Company reserves the right, without prejudice to the essential characteristics of the models described and illustrated here, to make any modifications it deems necessary for improvement or for any constructive or commercial need at any time and without notice.

All total or partial reproductions of this document in any format or by any means or procedure, photographic or electronic, without prior authorization of Brevetti MONTOLIT S.p.A. is prohibited. Each of these activities could lead to subsequent criminal proceedings.



Art. 1305F1 *(standard x mod. 181cm)*

- KIT AVANZAMENTO CON VOLANTINO
- KIT CUTTING PROGRESS SYSTEM WITH HAND WHEEL



Art. 58E

- TAPPETINO IN GOMMA PER MOSAICI, PIASTRELLE IN VETRO, DELICATE E SOTTILI (3MM).
- RUBBER PAD FOR MOSAIC TILES, PLUS DELICATE AND VERY THIN 3MM GLASS TILES.



Art. 1051

Art. 1049 - Art. 1051

- TAVOLINO DI SUPPORTO LATERALE
- LATERAL SUPPORT TABLE

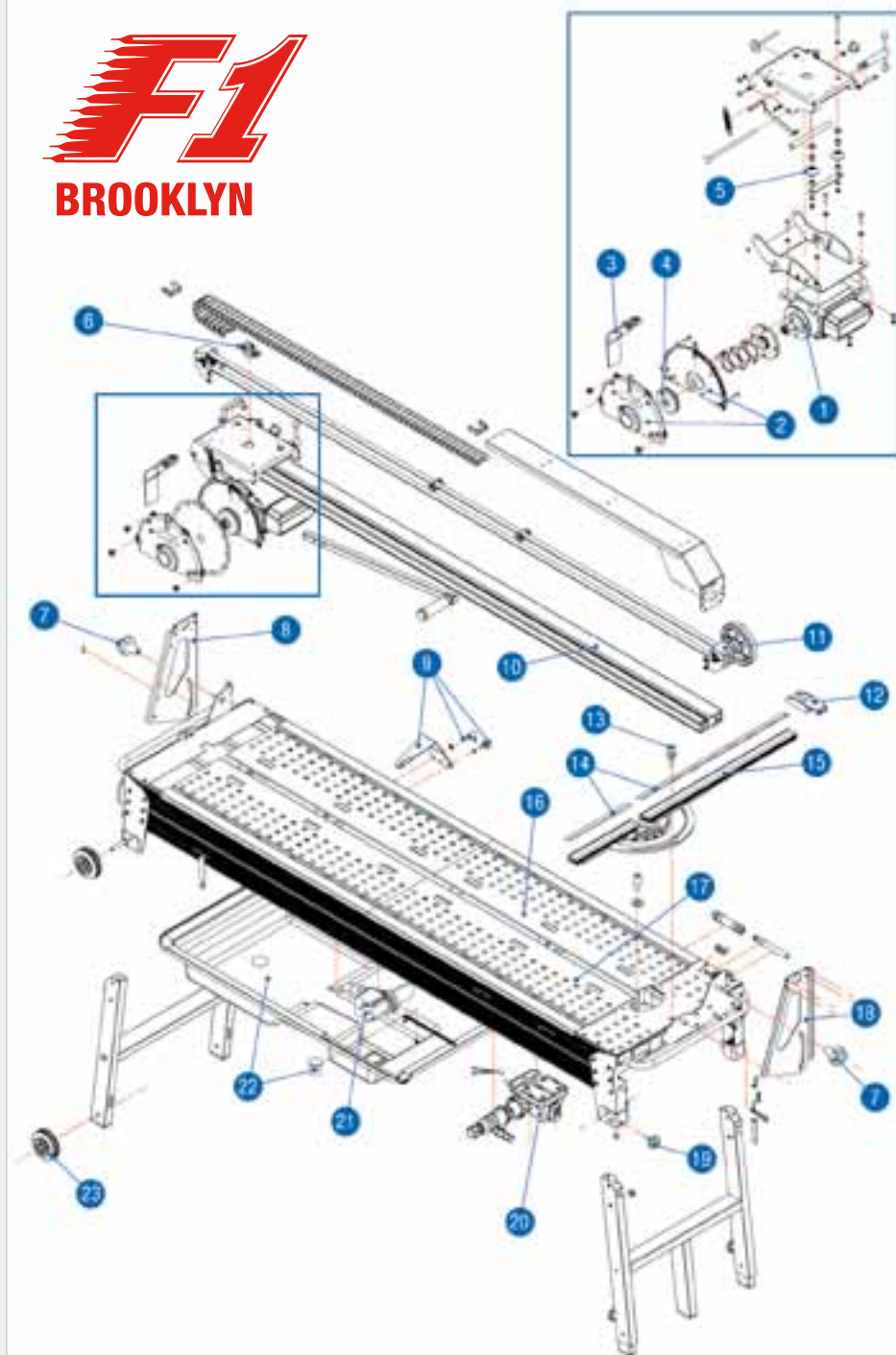


Art. 1049

Nr.	Art.	Descrizione	Description
1	1080MB	Motore 230V~/50Hz	230V~/50Hz - Motor
1	1081MB	Motore 115V~/60Hz	115V~/60Hz - Motor
2	1208F1	Carter copridisco completo	Complete blade guard
3	1088	Paraspruzzi	Water - splash guard
4	1103MB	Flangia disco completa	Complete blade flange
5	1195	Cuscinetto	Wheel - bearing
6	1132	Rubinetto dell'acqua	Water tap
7	1126F1	Pomolo bloccaggio piantone	Screw for upright
8	1095F1SX	Supporto SX	Upright SX
9	1161F1	Bloccaggio piastrella "Squeeze System"	Clamp for tile "Squeeze System"
10	1300F1	Binario x mod. 101cm	Sliding bar x mod. 101cm
10	1301F1	Binario x mod. 131cm	Sliding bar x mod. 131cm
10	1302F1	Binario x mod. 151cm	Sliding bar x mod. 151cm
10	1303F1	Binario x mod. 181cm	Sliding bar x mod. 181cm
11	1305F1	Kit avanzamento con volantino	Kit cutting progress system with hand wheel
12	1201	Nasello	Measurement guide
13	450P	Manettino bloccaggio squadra	Screw measurement guide
14	1073EV	Righette adesive millimetriche	Measurement guide stickers
15	1089EV	Squadra goniometrica x mod. 101-131cm	Goniometrical square x mod. 101-131cm
15	1198EV	Squadra goniometrica x mod. 151-181cm	Goniometrical square x mod. 151-181cm
16	1307F1	Lamiera inox "corta" con apertura x mod. 131cm	Stainless steel support "short" with opening x mod. 131cm
16	1308F1	Lamiera inox "lunga" con apertura x mod. 101-151-181cm	Stainless steel support "long" with opening x mod. 101-151-181cm
17	1309F1	Lamiera inox "corta" x mod. 131-151cm	Stainless steel support "short" x mod. 131-151cm
17	1310F1	Lamiera inox "lunga" x mod. 101-151-181cm	Stainless steel support "long" x mod. 101-151-181cm
18	1095F1DX	Supporto DX	Upright DX
19	1312F1	Pomolo bloccaggio gamba	Screw for locking leg
20	1191	Interruttore 230V~	230V~ - Switch
20	1155	Interruttore 115V~	115V~ - Switch
21	1082	Pompa elettrica ad immersione - 230V~ x mod. 101-131cm	230V~ - Electric immersion pump x mod. 101-131cm
21	1082F1	Pompa elettrica ad immersione - 230V~ x mod. 151-181cm	230V~ - Electric immersion pump x mod. 151-181cm
21	1083	Pompa elettrica ad immersione - 115V~ x mod. 101-131cm	115V~ - Electric immersion pump x mod. 101-131cm
21	1083F1	Pompa elettrica ad immersione - 115V~ x mod. 151-181cm	115V~ - Electric immersion pump x mod. 151-181cm
22	1206F1	Vasca dell'acqua con tappo di scarico	Water tank with drain plug
23	302F1	Ruota	Wheel

F1

BROOKLYN





Brevetti Montolit S.p.A.

Sedi operative/ Company headquarters:

Largo Cav. Montoli - 21050 Cantello (VA) Italy

Via Varese 4/A - 21050 Cantello (VA) Italy

Sede legale/Legal head office:

Via Turconi, 25 - 21050 Cantello (VA) Italy

Tel. ++39 0332 419 211

Fax ++39 0332 418 444

www.montolit.com - info@montolit.com